

St Paul's Catholic College, Manly



Year 7

Assessment

Handbook

2024

Table of Contents

1	Formal assessment program introduction.....	3
1.1	Course completion criteria.....	3
1.1.1	Successfully completing a course	3
1.1.2	Completing assessment tasks	3
1.2	What are the attendance requirements?.....	3
2	What do I need to know about assessment tasks?	3
2.1	What is assessment?.....	3
2.1.1	How am I notified about assessment tasks?	4
2.2	What do I do if I need to apply for an extension?	4
2.2.1	Applying for an extension	4
2.3	What happens if I am sick, or some other unforeseen circumstance happens?.....	4
2.3.1	Illness or misadventure.....	4
2.4	What happens if I hand in an assessment task late or miss it completely?.....	5
2.4.1	Implications of late or missed assessment tasks.....	5
2.4.2	Establishing the exact due time.....	5
2.5	What happens when technology fails?	5
2.6	What happens in the case of malpractice in an assessment task?	5
2.7	What do I do if I require disability provisions?	5
2.8	What happens if I have transferred into St Paul's Catholic College after assessment has commenced?.....	6
2.9	What type of assessment feedback will I receive?	6
2.10	Procedure for the completion of assessment tasks	6
3	Formal Assessment: Absence–Illness–Misadventure (AIM) Form.....	8
4.	Course assessment outlines.....	9
	English.....	10
	Geography.....	11
	History	12
	Mathematics	13
	Music	14
	Personal Development, Health and Physical Education	15
	Religious Education.....	16
	Science.....	17
	Technology	18
	Visual Arts	19

1 Formal assessment program introduction

This handbook has been developed to provide students and parents with information regarding assessment for Year 7 courses.

1.1 Course completion criteria

A student will be considered to have satisfactorily completed a course if, in the Principal's view, there is sufficient evidence that the student has:

- (a) studied the course developed or endorsed by the NSW Education Standards Authority (NESA); and
- (b) applied themselves with **diligence and sustained effort** to the set tasks and experiences provided in the course by the school (this is explained in more detail below); and
- (c) achieved some or all of the course outcomes.

1.1.1 Successfully completing a course

Throughout the year staff at St Paul's will provide students with learning opportunities to allow them to successfully complete the requirements of each course. If a student experiences challenges in meeting these requirements he will be given support and assistance to allow these challenges to be overcome.

1.1.2 Completing assessment tasks

In every course it is expected that students will complete every learning activity, including assessment tasks, to the best of their ability and by the specified date and time. If a student fails to complete an assessment task specified in the assessment program without a valid and accepted reason his parents will be sent an academic concern notification and assistance will be provided in supporting the student to complete the task. This will allow him to demonstrate achievement of the outcomes assessed.

1.2 What are the attendance requirements?

For the satisfactory completion of a course, a student's attendance at school is compulsory. There are four main areas that need to be clarified with regard to absenteeism.

- (a) All absences must be supported by the parent or caregiver providing letter, email, phone call or notification via the Compass parent portal.
- (b) Where absence coincides with either:
 - (i) the due date of an assessment task, or
 - (ii) the date an assessment task is to be held; an AIM form must be submitted to substantiate the absence.
- (c) Where a student's pattern of attendance interferes with his engagement with a substantial number of course outcomes, the student's parents / caregivers will be contacted to assist him develop acceptable attendance patterns that ensure outcomes are satisfactorily met.
- (d) **Approved Leave:** This **may** be granted by the Principal. An *Exemption from Attendance Form* must be completed prior to the absence. However, this does NOT exempt a student from completing assessment tasks. An AIM form must be submitted if an assessment task is scheduled or due during the approved leave. This must take place before the leave is taken.

2 What do I need to know about assessment tasks?

2.1 What is assessment?

Assessment tasks may take many forms, for example: written examinations, research assignments, projects, presentations, practical or field work reports. Whatever the form, the primary function of an assessment task is to improve learning by providing feedback to students and their teachers about what has been learnt.

Measuring achievement at various points throughout the course provides a better indication of ongoing student achievement.

2.1.1 How am I notified about assessment tasks?

Details of specific assessment tasks for each course have been provided later in this handbook. The approximate date of each task is also provided. It is the student's responsibility to keep himself informed about the timing of assessment tasks. It is the teacher's duty to provide the students with **an official notification** of the:

- (a) outcomes formally assessed in the task,
- (b) areas for assessment addressed in the task,
- (c) task due date and time (e.g., Period 3, Wednesday, 15 May 2024 – Week 3 Term 2), and
- (d) specific requirements

for each assessment task. This information must be given with **adequate notice** prior to the task due date. Any changes to the assessment schedule will be notified to students in writing.

2.2 What do I do if I need to apply for an extension?

Extensions (extra time to complete an assessment task) may be granted to a student in some cases of illness and/or misadventure. A student must apply in writing at least ONE week before the scheduled date of the task. (See 'AIM Form' in Section 3)

2.2.1 Applying for an extension

- (a) Obtain an "Application for Illness and Misadventure Form" (refer to copy in this handbook Section 3).
- (b) Complete the form and return it to the relevant KLA Leader of Learning at least a week prior to the scheduled due date.
- (c) The application will be considered by the KLA Leader of Learning and the Director of Teaching and Learning.
- (d) The student will be notified of the decision and if the extension is:
 - (i) **granted**, a new submission date will be given
 - (ii) **declined**, the student has the right to appeal this decision. This is done by writing to the Principal, who will discuss the application for extension with the student, Director of Teaching and Learning and relevant KLA / teacher.

2.3 What happens if I am sick, or some other unforeseen circumstance happens?

2.3.1 Illness or misadventure

If, due to illness, misadventure or compassionate grounds a student either:

- (a) misses an assessment task, or
- (b) is unable to complete an assessment task by the due date, or
- (c) is absent from school just prior to an assessment task being due or
- (d) his performance in a task is affected, or
- (e) is absent on the day an assessment task is due to be submitted.

In Year 7 a student must submit a completed "Application for Illness/Misadventure Form" (AIM Form - refer to Section 3 of this handbook) with an explanation of their absence. This must also be completed for a school event (e.g., sport) and if the student is on approved leave. When applicable, the task must still be completed by the due date or submitted the day before the due task. The outcome of the AIM Form will stipulate the decision.

The completed 'AIM form', with any necessary supporting documentation must be returned to the relevant KLA Leader of Learning within two days of the student returning to school.

The application will be considered by the KLA Leader of Learning and the Director of Teaching and Learning. The student will be notified of the decision and if the application is:

- (i) **granted**, the student will be notified of the outcome
- (ii) **declined**, the student has the right to appeal this decision. This is done by writing to the Principal, who will discuss the application with the student, Director of Teaching and Learning and relevant KLA leader.

2.4 What happens if I hand in an assessment task late or miss it completely?

2.4.1 Implications of late or missed assessment tasks

If a student misses an assessment task without a valid reason his parents will be sent an academic concern notification and assistance will be provided in supporting the student to complete the task. This will allow him to demonstrate achievement of the outcomes assessed.

2.4.2 Establishing the exact due time

Teachers will indicate to students in writing when an assessment task is precisely due e.g., beginning of Period 3, Wednesday, 15 May 2024 – Week 3 Term 2. There are some instances though when an exact lesson cannot be specified. In such cases, where only a due date is given, students have until **3:30pm on the due date** to submit an assessment task to their teacher. If the teacher cannot be found students are to submit the assessment task to the **College Reception** where office staff will sign and stamp the time/date on the task and place it in the relevant teacher's pigeonhole.

2.5 What happens when technology fails?

Failure to complete an assessment task on time due to technological problems e.g., computer failure, printer problems, lost files, computer viruses etc. will **NOT** be deemed acceptable reasons. Students are expected to keep back up files, rough copies etc. and make appropriate time allowances to avoid such problems.

2.6 What happens in the case of malpractice in an assessment task?

Malpractice is any activity undertaken by a student that allows them to gain an unfair advantage over others. It includes, but is not limited to:

- (a) copying someone else's work in part or in whole, and presenting it as their own
- (b) using material directly from books, journals or the internet without reference to the source
- (c) building on the ideas of another person without reference to the source
- (d) buying, stealing or borrowing another person's work and presenting it as their own
- (e) submitting work to which another person such as a parent, coach or subject expert has contributed substantially
- (f) using words, ideas, designs or the workmanship of others in practical and performance tasks without appropriate acknowledgement
- (g) paying someone to write or prepare material
- (h) breaching school examination rules
- (i) using non-approved aides during an assessment task
- (j) contriving false explanations to explain work not handed in by the due date
- (k) assisting another student to engage in malpractice
- (l) submitting work generated wholly, or in part, by Artificial Intelligence (AI).

A panel comprising the Director of Teaching and Learning and relevant KLA Leader of Learning will review any cases of suspected malpractice. If malpractice is proven, the student's parents will be sent an academic concern notification and an academic conference will take place with the student, teacher and relevant KLA Leader of Learning to assist the student understand the importance of completing assessment tasks with authenticity and integrity.

2.7 What do I do if I require disability provisions?

If a student requires disability provisions for assessment tasks (e.g., reader, writer, extra time, separate supervision etc.) his parents need to contact the Leader of Diverse Learning to discuss his eligibility. This needs to be done well in advance to allow sufficient time for the disability provisions required to be put in place.

2.8 What happens if I have transferred into St Paul's Catholic College after assessment has commenced?

If a student transfers into the school after the commencement of the Stage 4 Course assessment, he:

- (a) will sit all the remaining assessment tasks as prescribed in the assessment outline
- (b) may be required to complete alternative tasks for any assessments missed

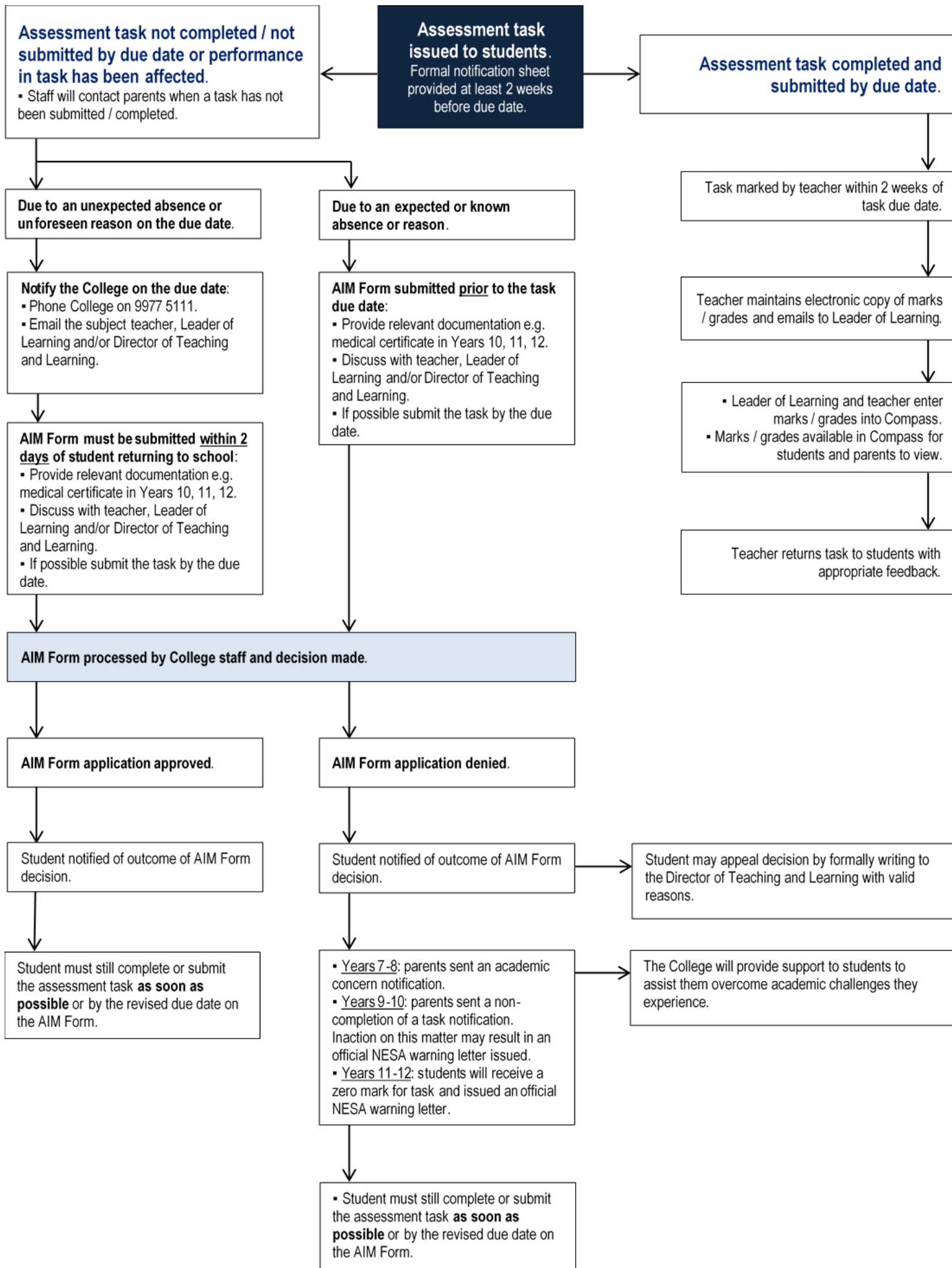
2.9 What type of assessment feedback will I receive?

Students will be given feedback on their level of achievement in each assessment task. This may take the form of grades, teacher comments, description of the understanding and skills demonstrated by the student, description of what was not achieved or areas that may need improvement. The type of assessment task conducted will determine the nature of the feedback.

Every student should reflect upon and analyse the feedback they receive in order to assist their understanding of the outcomes assessed in the task. Remember that the main purpose of assessment is to improve learning.

2.10 Procedure for the completion of assessment tasks

The flowchart on the next page provides an overview for the completion of assessment tasks. Specifically, it provides information on what procedures are followed when tasks are appropriately and not appropriately completed as per their specific requirements.



3 Formal Assessment: Absence–Illness–Misadventure (AIM) Form

This form is to be used when a student is absent for a formal assessment task or unable to submit a task by its due date or time due to illness, misadventure, approved Principal leave or approved involvement in a College event. Where absences are foreseen, the form must be submitted prior to the due date of the task. For unforeseen absences it is to be submitted within two days of the student returning to the College, accompanied by supporting documentation (where applicable).

Student name:			
Year group:			
Subject:			
Teacher:			
Task requiring consideration:	▪ Task number: ▪ Task description:		
Date task is / was due: / /	Date task was issued: / /
Date(s) absent from school: / / to / /		
Reason for this absence:	<input type="checkbox"/> Illness <input type="checkbox"/> Misadventure <input type="checkbox"/> Principal leave <input type="checkbox"/> College event <input type="checkbox"/> Other		
Specific details / evidence for this absence: (attach any supporting documents to this form, e.g. medical certificate)			
.....			
.....			
.....			
Has the task been completed / submitted?	<input type="checkbox"/> Yes <input type="checkbox"/> No		

.....
Student signature

.....
Parent / Caregiver signature

Please return this form to staff at Reception and ensure all sections above have been completed before submitting.

College use only

College decision

The student's reason for being absent from sitting / submitting this assessment task has been deemed:

Justified **Unjustified**

As a result, the action to be taken is as follows:

.....

.....

.....

.....
Director of Teaching and Learning signature

..... / /
Date

Received stamp

Date received: / /

- Scan of completed form emailed via Compass to: Parent and student Leader of Learning Subject teacher Director of Teaching and Learning
- For AIM forms involving HSC courses: Scanned electronic copy saved in student archives folder
- All AIM forms: AIMS database updated

4. Course assessment outlines

The following section contains assessment outlines for all Year 7 courses at St Paul's in 2024. Each assessment outline indicates the:

- (a) course category
- (b) syllabus outcomes
- (c) areas for assessment
- (d) focus outcomes assessed in each task
- (e) areas for assessment for each task
- (f) nature of each task (i.e., what students will be engaged in)
- (g) timing of each task

English

Course: Year 7 (Stage 4)
Assessment Period: 2024

ASSESSMENT TASKS

■ Times are approximate. Exact dates will be confirmed with a minimum of two weeks' notice.

Due Date	Focus Outcomes	Task type and overview of content and skills addressed in task	Areas for Assessment (✓)			Your grade
			A	B	C	
Wk. 9 Term 1	EN4-RVL-01, EN4-URB-01, EN4-ECA-01	In class reading and writing assessment Storytelling and mythology.	✓	✓	✓	
Wk. 7 Term 2	EN4-URA-01, EN4-ECA-01, EN4-ECB-01	Multimodal representation All the World's A Stage: Introduction to drama.		✓	✓	
Wk. 9 Term 3	EN4-RVL-01, EN4-URB-01, EN4-ECB-01	Speaking task Novel study.	✓	✓	✓	
Wk. 7 Term 4	All outcomes possible	Written examination Short answer and extended response on Term 3 and Term 4 content (Novel Study and Fantasy Worlds).	✓	✓	✓	

AREAS FOR ASSESSMENT

A Reading, viewing and listening to texts

B Understanding and responding to texts

C Expressing ideas and composing texts

OUTCOMES

Code	Descriptor. A student ...
EN4-RVL-01	uses a range of personal, creative and critical strategies to read texts that are complex in their ideas and construction
EN4-URA-01	analyses how meaning is created through the use of and response to language forms, features and structures
EN4-URB-01	examines and explains how texts represent ideas, experiences and values
EN4-URC-01	identifies and explains ways of valuing texts and the connections between them
EN4-ECA-01	creates personal, creative and critical texts for a range of audiences by using linguistic and stylistic conventions of language to express ideas
EN4-ECB-01	uses processes of planning, monitoring, revising and reflecting to support and develop composition of texts

Geography

Course: Year 7 (Stage 4)
Assessment Period: 2024

ASSESSMENT TASKS

■ Times are approximate. Exact dates will be confirmed with a minimum of two weeks' notice.

Due Date	Focus Outcomes	Task type and overview of content and skills addressed in task	Areas for Assessment (✓)			Your grade
			A	B	C	
Wk. 7 Term 3	GE4.2, GE4.4, GE4.5, GE4.7, GE4.8	Multimodal presentation Geomorphic hazards.	✓	✓	✓	
Wk. 7 Term 4	All outcomes possible.	Written examination Geographical skills and concepts.	✓	✓	✓	

AREAS FOR ASSESSMENT

A Communication

B Geographical concepts, tools and skills

C Geographical knowledge

OUTCOMES

Code	Descriptor. A student ...
GE4.1	locates and describes the diverse features and characteristics of a range of places and environments
GE4.2	describes processes and influences that form and transform places and environments
GE4.3	explains how interactions and connections between people, places and environments result in change
GE4.4	examines perspectives of people and organisations on a range of geographical issues
GE4.5	discusses management of places and environments for their sustainability
GE4.6	explains differences in wellbeing
GE4.7	acquires and processes geographical information by selecting and using geographical tools for inquiry
GE4.8	communicates geographical information using a variety of strategies

History

Course: Year 7 (Stage 4)
Assessment Period: 2024

ASSESSMENT TASKS

■ Times are approximate. Exact dates will be confirmed with a minimum of two weeks' notice.

Due Date	Focus Outcomes	Task type and overview of content and skills addressed in task	Areas for Assessment (✓)			Your grade
			A	B	C	
Wk. 6 Term 1	HT4-1, HT4-5, HT4-6, HT4-8, HT4-9, HT4-10	Source analysis Investigating the past.	✓	✓	✓	
Wk. 6 Term 2	HT4-2, HT4-3, HT4-4, HT4-6, HT4-9, HT4-10	Writing task Ancient societies.	✓	✓	✓	

AREAS FOR ASSESSMENT

A Historical knowledge

B Research and historical inquiry skills

C Communication

OUTCOMES

Code	Descriptor. A student ...
HT4-1	describes the nature of history and archaeology and explains their contribution to an understanding of the past
HT4-2	describes major periods of historical time and sequences events, people and societies from the past
HT4-3	describes and assesses the motives and actions of past individuals and groups in the context of past societies
HT4-4	describes and explains the causes and effects of events and developments of past societies over time
HT4-5	identifies the meaning, purpose and context of historical sources
HT4-6	uses evidence from sources to support historical narratives and explanations
HT4-7	identifies and describes different contexts, perspectives and interpretations of the past
HT4-8	locates, selects and organises information from sources to develop an historical inquiry
HT4-9	uses a range of historical terms and concepts when communicating an understanding of the past
HT4-10	selects and uses appropriate oral, written, visual and digital forms to communicate about the past

Mathematics

Course: Year 7 (Stage 4)
Assessment Period: 2024

ASSESSMENT TASKS

■ Times are approximate. Exact dates will be confirmed with a minimum of two weeks' notice.

Due Date	Focus Outcomes	Task type and overview of content and skills addressed in task	Areas for Assessment (✓)				Your grade
			A	B	C	D	
Ongoing Term 1	MAO-WM-01, MA4-IND-C-01, MA4-INT-C-01, MA4-LIN-C-01	Portfolio of ongoing formative quizzes/tasks Computation with positive integers, number properties and patterns.	✓	✓			
Week 7 Term 2	MAO-WM-01, MA4-ALG-C-01, MA4-FRC-C-01	In-class written test with notes Algebraic techniques, fractions and percentages.	✓	✓			
Wk. 8 Term 3	MAO-WM-01, MA4-INT-C-01, MA4-EQU-C-01	In-class written test Computation with positive and negative integers, equations, angle relationships and geometrical figures.	✓	✓	✓		
Wk. 7 Term 4	MA4-DAT-C-02, MAO-WM-01, MA4-INT-C-01, MA4-EQU-C-01, MA4-ANG-C-01, MA4-GEO-C-01, MA4-LEN-C-01, MA4-ARE-C-01, MAR-VOL-C-01, MA4-DAT-C-01, MA4-PRO-C-01	Written examination End of semester examination covering equations, angle relationships and geometrical figures length, perimeter, area, mass and temperature, statistics and probability.	✓	✓	✓	✓	

AREAS FOR ASSESSMENT

A Working mathematically

B Number and algebra

C Measurement and space

D Statistics and probability

OUTCOMES

Code	Descriptor. A student ...
MAO-WM-01	develops understanding and fluency in mathematics through exploring and connecting mathematics concepts, choosing and applying mathematics techniques to solve problems, and communicating their thinking and reasoning coherently and clearly
MA4-INT-C-01	compares, orders and calculates with integers to solve problems
MA4-FRC-C-01	represents and operations with fraction, decimals and percentages to solve problems
MA4-ALG-C-01	generalises number properties to operate with algebraic expressions including expansion and factorisation
MA4-IND-C-01	operates with primes and roots, positive integer and zero indices involving numerical bases and establishes the relevant index laws
MA4-EQU-C-01	solves linear equations up to 2 steps and quadratic equations of the form $ax^2 = c$
MA4-LIN-C-01	creates and displays umber patterns and fins graphical solutions to problems involving linear relationships
MA4-LEN-C-01	applies knowledge of the perimeter of plane shapes and the circumference of circles to solve problems
MA4-ARE-C-01	applies knowledge of area and composite area involving triangles, quadrilaterals and circles to solve problems
MA4-VOL-C-01	applies knowledge of volume and capacity to solve problems involving right prisms and cylinders
MA4-ANG-C-01	applies angle relationships to solve problems, including those related to transversals on sets of parallel A4lines
MA4-GEO-C-01	identifies and applies the properties of triangles and quadrilaterals to solve problems
MA4-DAT-C-01	classifies and displays data using a variety of graphical representations
MA4-DAT-C-02	analyses simple datasets using measures of centre, rage and shape of the data
MA4-PRO-C-01	solves problems involving the probabilities of simple chance experiments

Music

Course: Year 7 (Stage 4)
Assessment Period: 2024

ASSESSMENT TASKS

■ Times are approximate. Exact dates will be confirmed with a minimum of two weeks' notice.

Due Date	Focus Outcomes	Task type and overview of content and skills addressed in task	Areas for Assessment (✓)			Your grade
			A	B	C	
S1: Wk. 10 Term 1 S2: Wk. 9 Term 3	4.1, 4.2, 4.3, 4.10, 4.11, 4.12	Performance Popular music performance.	✓			
S1: Wk. 7 Term 2 S2: Wk. 6 Term 4	4.4, 4.5, 4.6, 4.7, 4.9, 4.10, 4.11, 4.12	Composition What is music? Composition.		✓		
S1: Wk. 8 Term 2 S2: Wk. 7 Term 4	4.7, 4.8, 4.9, 4.10, 4.11, 4.12	Listening task Aural identification of a range of repertoire.			✓	

AREAS FOR ASSESSMENT

A Performing

B Composing

C Listening

OUTCOMES

Code	Descriptor. A student ...
4.1	performs in a range of musical styles demonstrating an understanding of musical concepts
4.2	performs music using different forms of notation and different types of technology across a broad range of musical styles
4.3	performs music demonstrating solo and/or ensemble awareness
4.4	demonstrates an understanding of musical concepts through exploring, experimenting, improvising, organising, arranging and composing
4.5	notates compositions using traditional and/or non-traditional notation
4.6	experiments with different forms of technology in the composition process
4.7	demonstrates an understanding of musical concepts through listening, observing, responding, discriminating, analysing, discussing and recording musical ideas
4.8	demonstrates an understanding of musical concepts through aural identification and discussion of the features of a range of repertoire
4.9	demonstrates musical literacy through the use of notation, terminology, and the reading and interpreting of scores used in the music selected for study
4.10	identifies the use of technology in the music selected for study, appropriate to the musical context
4.11	demonstrates an appreciation, tolerance and respect for the aesthetic value of music as an artform
4.12	demonstrates a developing confidence and willingness to engage in performing, composing and listening experiences

Personal Development, Health and Physical Education

Course: Year 7 (Stage 4)
Assessment Period: 2024

ASSESSMENT TASKS

■ Times are approximate. Exact dates will be confirmed with a minimum of two weeks' notice.

Due Date	Focus Outcomes	Task type and overview of content and skills addressed in task	Areas for Assessment (✓)			Your grade
			A	B	C	
Wk. 10 Term 1	PD4-4, PD4-5, PD4-8	Practical assessment Fundamental movement skills ongoing assessment.		✓		
Wk. 8 Term 2	PD4-3, PD4-8, PD4-10	Research task Building identity and relationships presentation.	✓		✓	
Wk. 10 Term 3	PD4-2, PD4-6, PD4-7	In-depth study Devise a health campaign on an issue of choice.	✓		✓	
Wk. 7 Term 4	PD4-4, PD4-5, PD4-10, PD4-11	Practical assessment Applied skills testing.		✓		

AREAS FOR ASSESSMENT

A Health, wellbeing and relationships

B Movement, skills and performance

C Healthy, safe and active lifestyles

OUTCOMES

Code	Descriptor. A student ...
PD4-1	examines and evaluates strategies to manage current and future challenges
PD4-2	examines and demonstrates the role help seeking strategies and behaviours play in supporting themselves and others
PD4-3	investigates effective strategies to promote inclusivity, equality and respectful relationships
PD4-4	refines, applies and transfers movement skills in a variety of dynamic physical activity contexts
PD4-5	transfers and adapts solutions to complex movement challenges
PD4-6	recognises how contextual factors influence attitudes and behaviours and proposes strategies to enhance health, safety, wellbeing and participation in physical activity
PD4-7	investigates health practices, behaviours and resources to promote health, safety, wellbeing and physically active communities
PD4-8	plans for and participates in activities that encourage health and a lifetime of physical activity
PD4-9	demonstrates self-management skills to effectively manage complex situations
PD4-10	applies and refines interpersonal skills to assist themselves and others to interact respectfully and promote inclusion in a variety of groups or contexts
PD4-11	demonstrates how movement skills and concepts can be adapted and transferred to enhance and perform movement sequences

Religious Education

Course: Year 7 (Stage 4)
Assessment Period: 2024

ASSESSMENT TASKS

■ Times are approximate. Exact dates will be confirmed with a minimum of two weeks' notice.

Due Date	Focus Outcomes	Task type and overview of content and skills addressed in task	Areas for Assessment (✓)			Your grade
			A	B	C	
Wk. 7 Term 2	RECKA7, RECSA7	Written response Exploring the Bible.	✓	✓	✓	
Wk. 7 Term 4	RECKC7 RECSC7, RECKE7, RECSE7	Written examination Respecting human dignity, caring for our common home.	✓	✓	✓	

AREAS FOR ASSESSMENT

- A** Religious knowledge
- B** Research and religious enquiry skills
- C** Communication of religious concepts and beliefs

OUTCOMES

Code	Descriptor. A student ...
RECKA7	develop knowledge and understanding of the structure of the Bible and some of its principal themes
RECSA7	consider and draw conclusions about the significance of the Bible for the faith journey of believers
RECKB7	articulate an understanding of Jesus as the heart of Catholic community
RECSB7	investigate and identify key characteristics of Catholic communities and explain how these communities witness to the mission of the Church, local and universal
RECKC7	understands that human beings participate in, contribute to and are responsible for God's creation
RECSC7	explores and identifies ways by which people may be stewards of creation
RECKD7	understands the nature and purpose of common forms of prayer in the Catholic tradition
RECSD7	engages in a range of prayer forms and experiences
RECKE7	identifies that being human involves rights and responsibilities
RECSE7	applies Christian beliefs and principles to decision making processes

Science

Course: Year 7 (Stage 4)
Assessment Period: 2024

ASSESSMENT TASKS

■ Times are approximate. Exact dates will be confirmed with a minimum of two weeks' notice.

Due Date	Focus Outcomes	Task type and overview of content and skills addressed in task	Areas for Assessment (✓)						Your grade
			A	B	C	D	E	F	
Wk. 10 Term 1	SC4-5WS, SC4-6WS, SC4-7WS, SC4-8WS, SC4-9WS, SC4-16CW, SC4-17CW	Working scientifically skills test Working scientifically in the laboratory.	✓	✓	✓	✓		✓	
Wk. 7 Term 2	SC4-4WS, SC4-7WS, SC4-8WS, SC4-9WS, SC4-14LW, SC4-15LW	Written test The Living World.	✓	✓	✓	✓	✓	✓	
Wk. 9 Term 3	SC4-5WS, SC4-6WS, SC4-7WS, SC4-9WS, SC4-12ES, SC4-13ES	Working scientifically skills test Working scientifically in the laboratory.	✓	✓	✓	✓	✓	✓	
Wk. 7 Term 4	SC4-4WS, SC4-5WS, SC4-7WS, SC4-9WS, SC4-10PW, SC4-11PW	First hand investigation Investigating motion.	✓	✓	✓	✓		✓	

AREAS FOR ASSESSMENT

- A Knowing and understanding
- B Questioning and predicting
- C Planning and conducting investigations
- D Processing and analysing data and information
- E Problem-solving
- F Communicating

OUTCOMES

Code	Descriptor. A student ...
SC4-4WS	identifies questions and problems that can be tested or researched and makes predictions based on scientific knowledge
SC4-5WS	collaboratively and individually produces a plan to investigate questions and problems
SC4-6WS	follows a sequence of instructions to safely undertake a range of investigation types, collaboratively and individually
SC4-7WS	processes and analyses data from a first-hand investigation and secondary sources to identify trends, patterns and relationships, and draw conclusions
SC4-8WS	selects and uses appropriate strategies, understanding and skills to produce creative and plausible solutions to identified problems
SC4-9WS	presents science ideas, findings and information to a given audience using appropriate scientific language, text types and representations
SC4-10PW	describes the action of unbalanced forces in everyday situations
SC4-11PW	discusses how scientific understanding and technological developments have contributed to finding solutions to problems involving energy transfers and transformations
SC4-12ES	describes the dynamic nature of models, theories and laws in developing scientific understanding of the earth and solar system
SC4-13ES	explains how advances in scientific understanding of processes that occur within and on the earth, influence the choices people make about resource use and management
SC4-14LW	relates the structure and function of living things to their classification, survival and reproduction
SC4-15LW	explains how new biological evidence changes people's understanding of the world
SC4-16CW	describes the observed properties and behaviour of matter, using scientific models and theories about the motion and arrangement of particles
SC4-17CW	explains how scientific understanding of, and discoveries about, the properties of elements, compounds and mixtures relate to their uses in everyday life

Technology

Course: Year 7 (Stage 4)
Assessment Period: 2024

ASSESSMENT TASKS

■ Times are approximate. Exact dates will be confirmed with a minimum of two weeks' notice.

Due Date	Focus Outcomes	Task type and overview of content and skills addressed in task	Areas for Assessment (✓)						Your grade
			A	B	C	D	E	F	
07TEC_P, 07TEC_S: Wk. 7 Term 2 07TEC_C, 07TEC_M: Wk. 4 Term 4	TE4-1DP, TE4-2DP, TE4-3DP, TE4-9MA, TE4-10TS	Design project Material technologies: Design products with a broad range of traditional, contemporary and advancing materials.	✓	✓	✓	✓		✓	
07TEC_C, 07TEC_M: Wk. 7 Term 2 07TEC_P, 07TEC_S: Wk. 4 Term 4	TE4-1DP, TE4-2DP, TE4-3DP, TE4-4DP, TE4-7DI, TE4-10TS	Design project Digital technologies: Use programming languages to solve information problems and to automate repetitive tasks.	✓	✓	✓	✓	✓	✓	
Wk. 7 Term 4	All outcomes possible	Examination Covering Semester 1 and 2 content.	✓				✓	✓	

AREAS FOR ASSESSMENT

- A** Working with tools, materials and processes
- B** Designing and producing digital and non-digital solutions
- C** Project management and evaluation
- D** Traditional, contemporary and emerging technologies and sustainable solutions
- E** Use of data to automate digital solutions
- F** Developing innovative solutions for preferred futures

OUTCOMES

Code	Descriptor. A student ...
TE4-1DP	designs, communicates and evaluates innovative ideas and creative solutions to authentic problems or opportunities
TE4-2DP	plans and manages the production of designed solutions
TE4-3DP	selects and safely applies a broad range of tools, materials and processes in the production of quality projects
TE4-4DP	designs algorithms for digital solutions and implements them in a general-purpose programming language
TE4-5AG	investigates how food and fibre are produced in managed environments
TE4-6FO	explains how the characteristics and properties of food determine preparation techniques for healthy eating
TE4-7DI	explains how data is represented in digital systems and transmitted in networks
TE4-8EN	explains how force, motion and energy are used in engineered systems
TE4-9MA	investigates how the characteristics and properties of tools, materials and processes affect their use in designed solutions
TE4-10TS	explains how people in technology related professions contribute to society now and into the future

Visual Arts

Course: Year 7 (Stage 4)
Assessment Period: 2024

ASSESSMENT TASKS

■ Times are approximate. Exact dates will be confirmed with a minimum of two weeks' notice.

Due Date	Focus Outcomes	Task type and overview of content and skills addressed in task	Areas for Assessment (✓)		Your grade
			A	B	
S1: Wk. 8 Term 1 S2: Wk. 8 Term 3	4.1, 4.2, 4.3, 4.4, 4.5, 4.6	Artmaking task Observational drawing and mixed media artworks. The Vanitas.	✓		
S1: Wk. 5 Term 2 S2: Wk. 5 Term 4	4.7, 4.8, 4.9, 4.10	Written task Our Backyard – Margaret Preston.		✓	
S1: Wk. 6 Term 2 S2: Wk. 7 Term 4	4.1, 4.2, 4.3, 4.4, 4.5, 4.6	Artmaking task Relief printing.	✓		

AREAS FOR ASSESSMENT

A Artmaking

B Critical and historical studies

OUTCOMES

Code	Descriptor. A student ...
4.1	uses a range of strategies to explore different art making conventions and procedures to make artworks
4.2	explores the function of and relationships between artist – artwork – world – audience
4.3	makes artworks that involve some understanding of the frames
4.4	recognises and uses aspects of the world as a source of ideas, concepts and subject matter in the visual arts
4.5	investigates ways to develop meaning in their artworks
4.6	selects different materials and techniques to make artworks
4.7	explores aspects of practice in critical and historical interpretations of art
4.8	explores the function of and relationships between the artist – artwork – world – audience
4.9	begins to acknowledge that art can be interpreted from different points of view
4.10	recognises that art criticism and art history construct meanings